



FIBERSHIELD H

HORIZONTAL FIRE+SMOKE SHUTTER

AS1530.4



-/120/-

EN12101.1



<25m³/hour

Fibershield H fire curtains are fire rated up to -/120/- in accordance with AS1530.4. Fibershield H is a high quality, state of the art automatic fire protection barrier designed to protect large openings and voids.

Fibershield H is fail safe, closing on receipt of an alarm signal without the need for auxiliary power. For sizes over 5m closing distances, motorised closing is required, using battery back up systems.

This unique system allows Architects and Designers to provide large openings in floor slabs to create internal atriums and light wells in both existing buildings and new construction.

Smoke Control provides design assistance at every stage in the design and development process to ensure the system can be easily integrated into the building aesthetics, fire safety systems and the environmentally sustainable design requirements.

- Fire tested in accordance with AS1530.4
- Fire and Smoke Rated -/120/- FRL
- Lightweight
- Ideal for large openings up to 24m wide x 8m across



SMOKE
CONTROL



FIBERSHIELD H Horizontal Fire+Smoke Shutter

I INTRODUCTION

Fibershield H horizontal fire shutters were the first to be installed in the southern hemisphere. It is the only horizontal fire shutter system available that is power fail safe, requiring no battery backup or essential services power to operate in fire mode.

To maintain fire compartmentation, vertical fire curtains are required on every floor of the building. Fibershield H fire shutters can be installed every second floor so that no more than two floors are connected, thus reducing the total quantity of fire shutters and total cost for the design.

COMPLIANCE

Fibershield H fire curtains have been fire tested in accordance with AS1530.4 to provide a -/120/- Fire Resistance Level (FRL) and can be supplied and installed in accordance with AS1905.2 Fire Shutters.

The Fibershield H fire shutter also provides smoke separation. The system complies with the requirements of EN12101.1 Smoke Curtains.

TARGET	PERFORMANCE DATA	RESULTS
FIRE PROTECTION	Fire Shutter	Complies with AS1905.2 Fire Shutters
	Fire Rating (FRL)	-/120/- when fire tested in accordance with AS1530.4
	Permeability	<25 m ³ /hour when tested in accordance with EN12101.1
SMOKE PROTECTION	Spread of Flame	0, 0, 0, 2 when tested in accordance with AS1530.3
	Group Number	Group 1 when tested in accordance with AS3837
	Cycle Test	10,000 open-close cycles
FUNCTIONALITY	Operating Speed	4.5 m/min
	Maximum Pressure Differential	30Pa when fully closed for sizes < 50m ²
	System Weight	35 kg per linear metre of the total perimeter
	Maximum Sizes	20,000 mm max width x 5,000 mm max. Closing direction is always over the shortest distance

I FUNCTION

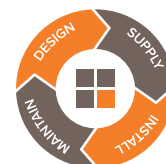
SYSTEM OPERATION

The system is typically in the open position to provide light transmission and air movement. On receipt of an alarm, the Fibershield H fire shutter deploys (fail safe) to provide fire and smoke compartmentation. On reset of the Fire Indicator Panel, the system automatically rewinds back into the standby position.

The controllers require a standard 240V, 10A power supply and an alarm signal in the form of a normally closed dry contact. A localised smoke or heat detector may also be used to activate the system. Please contact our technical department for details on 1300 665 471.

INSTALLATION

In line with Smoke Control's mission to provide customers with reliable solutions, the Fibershield H system is installed by our fully trained and approved installer network.



MAINTENANCE

As with all essential services Fibershield H should be maintained in strict accordance with our documented procedures by fully trained and competent technicians. Operational tests alone are not considered adequate and when conducted by inexperienced personnel, may lead to damage of the product. Smoke Control offers a comprehensive preventative maintenance program which has proven costs savings over the life of the product.

Please contact our maintenance department for details on 1300 665 471.



FIBERSHIELD H Horizontal Fire+Smoke Shutter

APPLICATIONS

Ideal for small, medium and large openings in floors, Fibershield H horizontal fire and smoke shutters can be used to provide fire and smoke compartmentation in:

- office buildings
- shopping centres
- hospitals

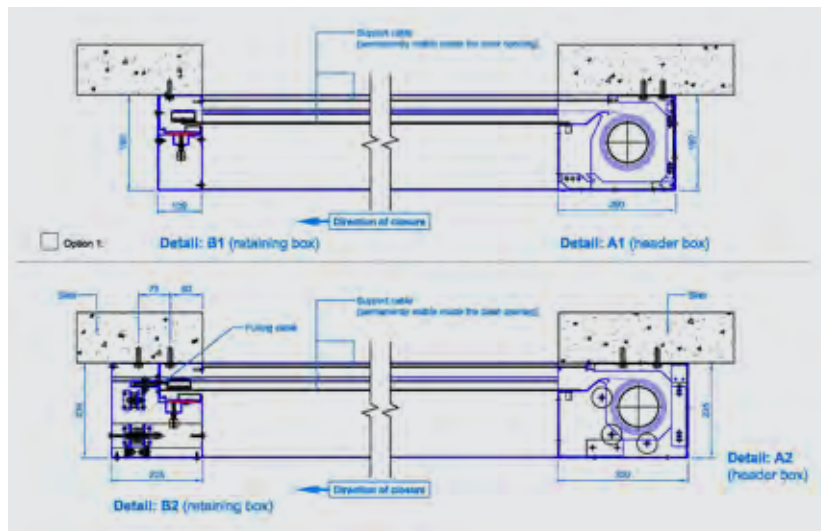
ACCESSORIES

- Battery Backup
- Rewind switch

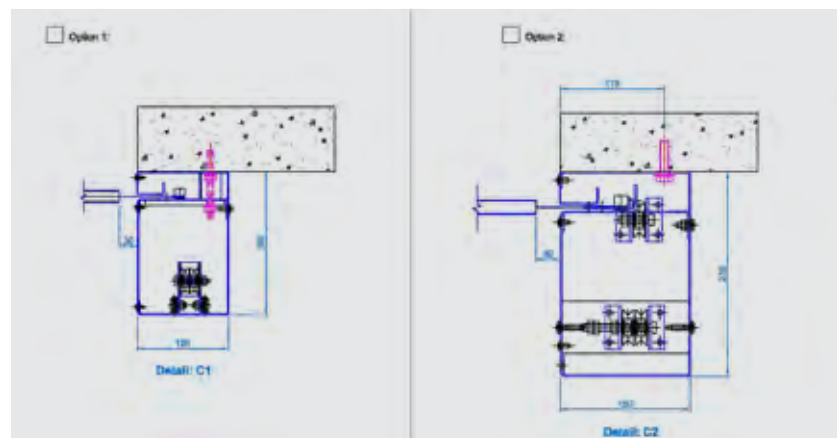


PRODUCT DIMENSIONS

Header box & Retaining box details



Side guide details





GENERAL INFORMATION

I TECHNICAL SUPPORT



Smoke Control offers obligation free technical support and pricing throughout your design and documentation stage so you can accurately prepare your budgets through value engineering.

You can also download the set of specifications, drawings and technical data from our website www.smokecontrol.com.au.

Contact our technical department to discuss your project requirements, or feel free to arrange a meeting.

Australia
1300 665 471

International
+61 2 96814000

New Zealand
+64 9 300 1980

A LITTLE MORE ABOUT US...

Smoke Control was established in 2003. We partner with leading local and international organisations to work with the new performance-based design environment - in addition to the traditional prescriptive environment - designing and installing systems to meet the challenging fire and smoke control demands of modern buildings.

Constant research and development continue to enhance our offering of fire windows, fire shutters and fire & smoke curtains, bringing the most innovative technology to both regular and unique project challenges. If you cannot find what you are looking for, please contact our team as we may already have a solution for you.

Smoke Control services all regions in Australia and New Zealand via our own offices and people. International customers can contact our Australian office by phone or email for your nearest distributor.

*We believe people deserve to work & live
in safe & beautiful buildings*

